



Viva The Midyear!



47th ASHP Midyear Clinical Meeting & Exhibition

December 2-6, 2012 | Mandalay Bay Hotel | Las Vegas, Nevada

More activity than a 24-hour wedding chapel, more excitement than a dozen flying Elvises—it's ASHP's 2012 Midyear in Las Vegas!

Viva the Midyear!

The Midyear is the largest gathering of pharmacy professionals in the world and attracted over 5,000 students last year! Whether you are just entering pharmacy school or about to graduate, you will find a wealth of programming and activities designed just for you.

Highlights include:

- Interactive and informative student programming
- The Residency Showcase and PPS
- Dozens of opportunities to network with your peers and seasoned practitioners to help jump start your career

Vegas Goes Virtual—ASHP Connect, our member-only social media platform, takes the conversations online. Keep up with announcements, suggestions and reminders through the ASHP blog. Share your adventures with the ASHP Facebook community. And discuss a presentation with your colleagues—while it's in progress—through our Twitter feed.



**Follow
Midyear 2012
on Twitter**



**HASHTAG
#ashpmidyear**

NEW!

Advance Your Career

at the ASHP Theme Center

While in the Exhibit Hall, make sure to stop by ASHP's Advance Your Career Theme Center! Learn more about the PhORCAS (Pharmacy Online Residency Centralized Application Service) system and ASHP's specialty certification preparatory and recertification products. The ASHP New Practitioners Forum will be hosting in-person mock interview and CV review sessions. Those attendees interested in testing their interview savvy or getting another set of eyes to look at their CV should keep an eye out in upcoming ASHP NewsLinks for the opportunity to sign-up for an appointment or can sign-up at the theme center during exhibit hall hours (keeping in mind there is limited availability and appointments are available on a first come, first serve basis). Stop by, grab a light snack, catch up with current events on our Live CNN broadcast, and learn more about these ASHP initiatives that will assist you in advancing your career.

Join more than 20,000 of your peers to network, tap into professional opportunities, learn about the latest practices and products and advance your career.



Tips for Student Attendees

- Arrive to sessions a few minutes early and try not to leave early or cause distractions.
- Be sure to silence your cell phone, but feel free to “tweet” using #ashpmidyear.
- Drink plenty of water and pack a snack in your bag.
- Adhere to the business casual dress code for general meeting activities and receptions; but remember, business professional dress is highly encouraged for Residency Showcase and PPS.
- Dress in layers as it can be chilly at the convention center.
- Wear comfortable shoes or pack a pair of flip flops in your bag to use for your commute to and from your hotel.
- Check *News & Views* daily for updates and meeting news.

First Midyear?

As a first-time attendee we want to make sure that you get the most out of the meeting and that you have an enjoyable experience. In an effort to assist you, ASHP is pleased to offer some exciting benefits exclusively for first-time attendees.

- Attend the First-Time Attendee Welcome Event and Self-Guided Tours on Sunday, December 2 at the Mandalay Bay Hotel. Get the scoop on various meeting activities, where to go for help, as well as tips for staying informed and managing your time and your energy during a busy week.
- At the welcome event, or at the Member Information Center, you will receive a special star appliqué. This star will identify you as a “VIP” and should be affixed to your badge.
- Pick up your class ribbon, or other applicable ribbons to adorn your badge at the ASHP Member Information Center.

The Midyear Mobile App

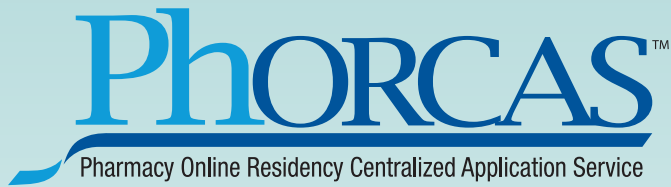
IN APP STORES NOVEMBER 15



NEW AND IMPROVED! ASHP’s Mobile Midyear puts the ASHP Midyear Clinical Meeting and Exhibition program on your smart phone. Search educational sessions, exhibits, social events, Residency Showcase, poster sessions and add them all to your personal calendar.

The application will be available for iPhone®, iPad®, Android™, and BlackBerry® users November 15 in app stores and at www.ashp.org/mobilemidyear

The Residency Application Process
Has Never Been This Easy!



Let PhORCAS help you navigate your road in applying for residency training programs!

PhORCAS (Pharmacy Online Residency Centralized Application Service), is a web-based tool that brings residency application material together in one location. By streamlining the residency recruitment process, it decreases the administrative burden that comes with paper applications—overall saving you time and resources.

PhORCAS offers endless benefits for residency programs, resident applicants, and reference writers by simply making the process easier.

Benefits to Applicants:

- ONE online submission—PhORCAS will disseminate all of your information to all of the applied programs. Currently, there is almost 100% program participation.
- Less mess, less stress—you have enough on your mind during this busy time. No more copying applications or rushing to overnight packages. And, you get to be ecologically diligent—NO MORE PAPER!
- Flexibility—You can customize all of your submissions or leave them standardized.
- PhORCAS will electronically track where you are in the application process. No more calls to reference providers or confirmation of transcript receipt.
- One-stop shopping: the National Matching Service and PhORCAS is all connected; you can sign up for both via PhORCAS!
- PhORCAS is available for the post match process
- It's cheaper than copying and mailing (especially for multiple programs or overnighting applications)! The cost is \$75 for the first four applications; \$25 for each additional application.

While at The Midyear, you can learn more about PhORCAS!

- Pick up one of our information brochures at Registration, Meeting Information, or the Member Center.
- Attend the PhORCAS information session on Sunday, December 2, 2:30pm – 3:15pm; South Seas D, Level 3, Mandalay Bay South Convention Center.
- Learn more at The ASHP *Advance Your Career* Theme Center inside the Exhibit Hall where there will be staff available to answer your PhORCAS questions.

What is **The Midyear** to YOU?



Upload your **Midyear 2012 video clips** and win.

ASHP is asking all Midyear attendees to video your Midyear 2012 experience and submit clips that ASHP will collect, combine and edit to showcase pharmacy's greatest meeting on a global scale!

Here's the gist: Break out your smart phones and flip cameras!

We want you to submit 2 minute video clips of your favorite Midyear activities. We are looking for a wide range of events or testimonials—and just like The Midyear, we want you to be creative and unique!

*Submissions will be accepted through January 2013.
All submissions will be entered into a raffle for **2 FREE full meeting registrations for The Midyear 2013!***

For more information, and to submit your video visit www.ashp.org/midyearvideo



© 2012 ASHP® HPSM1812

Tips for Success

The ASHP Residency Showcase at the Midyear is the largest and most widely respected pharmacy residency showcase in the nation. It is also one of the most popular and highly attended aspects of the Midyear, and an invaluable resource for students. And it's FREE to attendees—no additional fee is required and all Midyear registrants can participate.

So here is a little “Residency 101” to help you prepare for success at the 2012 ASHP Residency Showcase.

BEFORE THE MIDYEAR

Know before you go: To be a confident and successful residency candidate you want to be prepared before you arrive at the meeting. Review the pre-meeting webinar series provided by ASHP on topics such as CV Writing, Interview Skills, Residency Showcase and more.

Visit www.ashp.org/students for more information.

- **Research before you arrive**—Review residency program information available from ASHP and program web sites. Be knowledgeable about the basic attributes of the specific programs of interest to you (e.g. number of residents, program structure, location, setting, etc.). Demonstrating to program representatives that you have done some research about them prior to the Midyear can go a long way to establish your credibility. Use the Residency Showcase to clarify unanswered questions and to narrow your selection.
- **Prepare a CV**—You want to have a strong CV because this is what you will be judged upon when programs are deciding who to invite for on-site interviews. If you need some guidance, speak with an advisor or mentor, and don't forget to check out the resources on the ASHP website at www.ashp.org/cvreview.



**FREE
ADMISSION**
to the Residency Showcase
for all meeting
registrants

- **Brand yourself**—Purchase professional business cards, stationery and print ample copies of your CV on resume paper to bring along with you. This adds a professional touch to your networking at the Midyear. Remember to ask for business cards from representatives you meet at each program so you can promptly follow up with a handwritten thank you note.

AT THE MIDYEAR

- **Business Attire is expected**—Although the rest of the Midyear is business casual, at the Residency Showcase and PPS it is recommended that you wear conservative business professional attire.
- **Schedule and prioritize**—The Residency Showcase is broken down into three sessions: Monday afternoon, Tuesday morning, and Tuesday afternoon. Participating sites are only present at single session! Determine your schedule and prioritize the programs you would like to meet as you may not have time to visit them all.
- **Map out your route**—Once you are onsite, look at the diagram of the Showcase to see where the sites you want to visit are located in the hall. The hall is large and booths are laid out by site, NOT by type of residency program.
- **Be respectful**—The Residency Showcase is very busy. Be aware of the value of your time, as well as others. A good rule of thumb is to spend no more than 10–15 minutes at any booth, especially if you see others waiting to speak with a program representative. If you are just browsing and will not be completing a residency in the upcoming year, be respectful of those who are looking for their match.
- **Take notes**—Keep a journal to record your impressions of each program as you make your way through the Residency Showcase. This will help you stay organized and to compare and contrast various program attributes upon your return home. Write down who you met, what you liked (and didn't), and items to clarify with further research. Don't forget to promptly send a follow-up thank you email to the person you spoke with.

TALKING TIPS!

Have questions prepared to ask each program and be prepared to answer questions directed at you. Remember, you are always being interviewed!

Be prepared to ask:

- What are the opportunities for teaching, research, and/or rotations (required or elective)?
- When assessing candidates, what qualities of the potential resident does your program place the greatest emphasis?
- Are there any unique qualities that make your residency program different from others?

Be prepared to answer:

- Why are you SPECIFICALLY interested in our program?
- What unique qualities would you bring to our residency program?
- How would our residency program help you to achieve your career goals?

Don't ask:

- Where are you located? (This shows you did not do any research)
- How often do I have to work weekends? (If you must know, reword to "What opportunities do you provide for weekend staffing assignments?")
- Can you tell me about your program? (remember to ask specific questions demonstrating that you have researched this program before arriving at the Showcase)



PPS—If You're Not Looking Here, You're Not Looking.

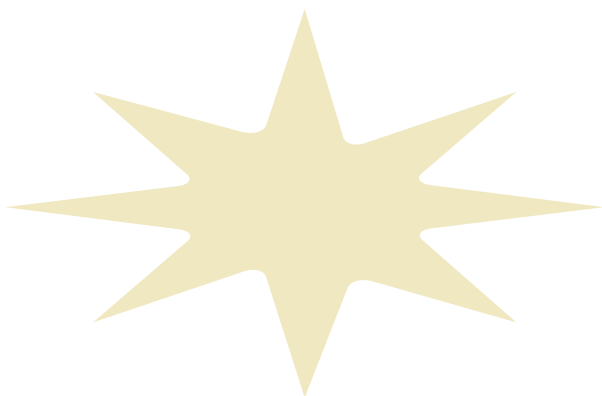
Don't miss out on the action of CareerPharm + PPS when over 2,000 pharmacy job, fellowship and residency candidates and 300 pharmacy employers meet face to face at the Personnel Placement Service (PPS). Using a special job board just for paid PPS registrants, pharmacy candidates and employers can connect online pre-meeting, exchange information using our messaging system and schedule appointments.

At the Midyear, employers are provided a private interview booth in the PPS hall to conduct interviews. Visit our website for more details and to register online for PPS.

Registration Fees and Deadlines

Applicant Type	Onsite
Current Student	\$125

PPS Registration is conducted online. Please visit our website, www.careerpharm.com/basippsinfo.aspx



Unless otherwise noted, all sessions are located in Mandalay Bay South Convention Center.

Saturday, December 1

7:00 a.m. – 6:00 p.m. Breakers E, Level 2

Clinical Skills Competition Semi-Final Round

(Closed session)

Sponsored by the ASHP Research and Education Foundation

It's the battle of the best and brightest. Winning teams from the Preliminary Round (school-level) competitions at each college of pharmacy will compete in the Semi-Final round at the national level, showcasing their clinical skills and knowledge.

To view a listing of competing schools, please see page 15.

ASHP's PharmPrep Live!

A Board Review Workshop

Saturday, December 1 | 8:00 a.m. - 5:00 p.m.

Mandalay Bay D, Level 2

Separate fee required. Registration is limited.

Lunch is on your own.

Preparing for the Pharmacy Board Exam? We've got the workshop for you! Ask around—faculty, advisors, and workshop alum will all agree that this is the “must attend” board review of the year. The editors of ASHP's *PharmPrep Interactive Case-Based Board Review* bring the text to life at a full-day workshop to help you prepare for the board examination to become a licensed pharmacist. The workshop will incorporate evidence-based approaches to decision making and important disease states you are likely to encounter on the board exam. Participants will receive a free 15-month access to ASHP's *PharmPrep Online*—a \$75 value! Don't forget to bring a calculator!



Sunday, December 2

7:00 a.m. – 8:30 a.m.

Pharmacy Student Forum Advisory Group Meetings

(Closed session by invitation only)

8:30 a.m. – 10:00 a.m.

Lagoon L, Level 2

SSHP Leaders Workshop

Are you a current officer or emerging leader in your Student Society of Health-System Pharmacy (SSHP)? If so, then please plan to join other student leaders from across the nation to network, share, and reapply best practices from fundraising to programming.



Presenters: *Thomas Achey, PharmD Candidate, Auburn University, and Vice Chair, Pharmacy Student Forum Executive Committee, Helena, AL; Thomas Lupton, PharmD Candidate, University of Kansas, and Member, Pharmacy Student Forum Executive Committee, Lawrence, KS*

11:30 a.m. – 12:30 p.m.

Residency Training Primer

Come learn the basics of residency training and how it can benefit your career. These concurrent sessions will answer all the questions you may have—from should I do a residency, all the way to how to apply, and the basics of the match. “Residency Training 101: Should I Do a Residency?” is for students who have decisions to make about the residency path and “Residency Training 102: Navigating the Application Process” is for those who have full confidence that a residency is for them! It's never too early to start preparing, and it is never too late to get a few last minute tips, so stop by to find out what you can do to improve your residency prospects.

Residency Training 101:

Should I Do a Residency?

South Seas J, Level 3

Presenter: *David Warner, PharmD, Associate Chief Pharmacy Officer, Duke University Hospital Department of Pharmacy, Durham, NC*

Residency Training 102: Navigating

the Application Process

South Seas D, Level 3

Presenter: *Sarah Boyd, PharmD, BCPS, Pharmacy Clinical Coordinator, St. John's Regional Medical Center, Joplin, MO*

1:00 p.m. – 3:50 p.m.

Breakers E, Level 2

Clinical Skills Competition Final Round Presentations

Sponsored by the ASHP Research and Education Foundation

It's the battle of the best and brightest. On Saturday, winning teams from the Preliminary Round (school level) competitions at each college of pharmacy competed in the Semi-Final Round at the national level, showcasing their clinical skills and knowledge. If you think you've got what it takes to be a champion in your pharmacy school or maybe even at the Clinical Skills Competition next year, check out the Final Round presentations from the top ten finalist teams. You are invited to stop in as an observer and get a good idea of what it takes to be a national finalist in the Clinical Skills Competition and enjoy the range of presentations at this inspiring and impressive session. Stick around following the presentations for the case review with the national case writer.

1:30 p.m. – 2:30 p.m. South Seas D, Level 3

Mysteries of “The Match”

Are you interested in a residency but afraid of “The Match”? Don’t be! Come learn how the pharmacy residency matching service works, learn strategies to successfully navigate through the Match, and get tips on what to do if you don’t match. Dispel the rumor suggesting the Match is a scary process.

Presenters: *Mary Hess, PharmD, FASHP, FCCM, FCCP, Associate Dean, Student Affairs, Jefferson School of Pharmacy, Thomas Jefferson University, Philadelphia, PA; Lea Eiland, PharmD, BCPS, FASHP, Associate Clinical Professor & Associate Department Head of Pharmacy Practice; Auburn University Harrison School of Pharmacy, Huntsville, AL*

2:30 p.m. – 3:15 p.m. South Seas D, Level 3

PhORCAS: The New Centralized Application System for Pharmacy Residencies

PhORCAS is the new Pharmacy Online Centralized Application Service. Come to this session to learn about the new process and how it will save you time in the residency application process. You’ll also have an opportunity to ask questions about this new service.

Presenters: *Robert Montgomery, Liaison International, LLC; Brendan Reichert, MS, RPh, Assistant Director of Med Use Informatics, The Johns Hopkins Hospital, Baltimore, MD*

3:15 p.m. – 4:45 p.m. South Seas D, Level 3

Make a Lasting Impression: Evaluating Your Interview Skills

Interviews in your near future? There could be in a matter of months as you pursue an internship, residency or other career options, so be ready to make a lasting impression. This workshop includes role-play and live examples of common interview formats and questions you may encounter.

Note: This workshop builds on the Webinar presentation “Interview Preparation: an Overview” (available at www.ashp.org/students) where you will learn about interview formats and how to develop your personal interview strategy. It is strongly recommended that you view the Webinar prior to attending the workshop, but not mandatory!

Moderator: *Mary Hess, PharmD, FASHP, FCCM, FCCP, Associate Dean, Student Affairs, Jefferson School of Pharmacy, Thomas Jefferson University, Philadelphia, PA*

5:30 p.m. – 7:00 p.m. Mandalay Bay H, Level 2

Awards Ceremony and Student Society Showcase

Please join us for an evening to recognize and celebrate the accomplishments of our ASHP student leaders. Student Societies of Health-System Pharmacy (SSHPs) will spotlight their achievements in the annual Student Society Showcase. Take this opportunity to learn about best practices from SSHPs across the nation and find out how you can reapply their successful event on your campus! Stick around to cheer on the recipients of the ASHP Student Leadership Award, ASHP Foundation Student Research Award, and of course, you don’t want to miss the announcement of the Clinical Skills Competition winners.

Emcees: *Samar Chakar, PharmD Candidate, University of New England College of Pharmacy, and Member, Pharmacy Student Forum Executive Committee, Lawrence, MA; Jacalyn Jones, PharmD Candidate, Northeast Ohio Medical University College of Pharmacy, Pharmacy Student Forum Executive Committee, Rootstown, OH*

Pharmacy Student Forum Opening Session

Sunday, December 2 | 10:00 a.m. – 11:20 a.m.
South Seas D, Level 3

Moderator: *Lisa Scherkenbach, PharmD Candidate, University of Minnesota, and Chair, Pharmacy Student Forum Executive Committee, St. Paul, MN*

Join your fellow ASHP Pharmacy Student Forum members to kick off The Midyear! This session will start with a lot of excitement as the top 10 finalist teams from the national Clinical Skills Competition are announced!

As an added bonus, you will be entertained and inspired by our keynote speaker, **Brad Nieder, MD**, as he gives you a dose of humor and advice. Don’t miss it!

Laughter is the Best Medicine



Dr. Brad is unique. (After all, how many physicians do you know who can make you laugh?) He’s been described as Jerry Seinfeld or Ray Romano...with an “MD.” Always a fan of standup comedy and improvisation, Dr. Brad became a founding member of the SIMPS improv troupe while attending Stanford University. During medical school at the University of Colorado, he frequently performed standup comedy throughout Denver

for both live audiences ... and cadavers. He then moved on to the Medical College of Virginia for his residency. He still traverses the country, but he once again lives in Denver, a general practitioner by training who some would say is really a specialist in Healthy Humor™. And while he has NOT been published in the New England Journal of Medicine, he has co-authored the book *Humor Me*, which features his popular poem of wellness advice. And he has a CD and DVD, too! And some pretty cool T-shirts! Those hotshot academic physicians can’t say that!



PHARMACY STUDENT FORUM

Opening Session

Monday, December 3 | 9:00 am – 10:30 am

PRESIDENTIAL ADDRESS

Kathryn R. Schultz, PharmD, MPH, FASHP

President, American Society of Health-System Pharmacists

KEYNOTE SPEAKER

President Bill Clinton

Embracing our Common Humanity



President Bill Clinton served the United States for eight years during a time of unprecedented prosperity and change. Now, President Clinton is a powerful voice for progress around the world as he shares his unique insights and observations at the ASHP 2012 Midyear Clinical Meeting. In his presentation, President Clinton describes the

challenge of globalization, emphasizes our growing interdependence, and points the way toward a common future based on shared goals and values.

TIPS FOR ATTENDEES

Plan Ahead

- Plan to register and pick up your badge before Monday morning to avoid lines and wait times.
- On Monday morning, allow for extra travel time to the Mandalay Bay Events Center.

Arrive Early

- Doors open at 8:30 a.m.
- Space in the Event Center is limited.
- Seats will be available on a first-come basis. Reserving or holding seats will not be permitted.
- Additional seating will be available in several overflow rooms to view the Opening Session.

Follow Directions

- ASHP staff and volunteers will be stationed in and around the Event Center to direct traffic flow and assist attendees.

Monday, December 3

8:15 a.m. – 9:15 a.m.

Bayside B, Level 1

Student Poster Session

“Wow, you presented at The Midyear?” Impress professors, potential employers, and peers when you present a poster at the prestigious ASHP Midyear Clinical Meeting.

11:15 a.m. – 12:45 p.m.

Mandalay Bay B, Level 2

Career Pearls: Days in the Lives of Health-System Pharmacists

Undecided about your career path? From clinical to management, informatics to ambulatory care- the options seem endless! Hear from 12 pharmacists who work in every aspect of hospital and health-system pharmacy practice to learn more about what a day-in-the-life is like. Take away information about careers you have interest in but never took the time to learn about-you may even find something you never knew existed.

Moderator: Thomas Lupton, Pharm.D. Candidate, University of Kansas, and Member, Pharmacy Student Forum Executive Committee, Lawrence, KS

PRESENTATIONS:

GROUP 1 | 11:20 a.m. – 12:00 p.m.

Pediatric Specialist: Sherry Luedtke, PharmD, FPPAG, Associate Professor, Pharmacy Practice, Texas Tech HSC School of Pharmacy, Amarillo, TX

Medication Safety: Amanda E. Prusch, PharmD, BCPS, Clinical Pharmacy Specialist-Medication Safety, Lancaster General Health, Lancaster, PA

Small/Rural Hospital Practice: Debbie Cameron Sisson, RPh, MS, PharmD, Clinical Pharmacist, St Luke's Hospital and Assistant Professor, University of Minnesota College of Pharmacy, Duluth, MN

Management and Administration: Michael Nnadi, PharmD, MHS, Corporate Vice President /Chief Pharmacy Officer, Novant Health, Winston-Salem, NC

OR/Anesthesia Specialist: Eric L. Chernin, RPh, Pharmaceutical Care Specialist-OR Pharmacy, Sarasota Memorial Hospital, Sarasota, FL

Informatics: Elizabeth Breeden, DPh, MS, Assistant Professor, Department of Pharmacy Practice Director, Master of Health Care Informatics Program, Lipscomb College of Pharmacy, Nashville, TN

GROUP 2 | 12:05 p.m. – 12:45 p.m.

Academia: Kelly M. Smith, PharmD, BCPS, FASHP, FCCP, Associate Dean, Academic and Student Affairs Associate Professor, Department of Pharmacy Practice and Science, UK College of Pharmacy, Lexington, KY

Ambulatory Care: Mary Ann Kliethermes, BS, PharmD, Vice-Chair Ambulatory Care, Associate Professor, Midwestern University Chicago College of Pharmacy, Downer's Grove, IL

Oncology Specialist: Bradley Burton, PharmD, BCOP, CACP, Clinical Pharmacy Specialist- Medical Oncology, The Johns Hopkins Hospital, Baltimore, MD

Critical Care Specialist: Stacey Folse, PharmD, MPH, BCPS, Medical ICU Clinical Pharmacy Specialist Emory University Hospital, Atlanta, GA

Emergency Medicine Specialist: Melinda J. Ortmann, PharmD, BCPS, Clinical Pharmacy Specialist-Emergency Medicine, The Johns Hopkins Hospital, Baltimore, MD

Emerging Sciences-Pharmacogenomics: Kristine Crews, Pharm.D., BCPS, Translational Research Laboratory Director and Director, PGY2 Pharmacogenetics Residency Program, Pharmaceutical Sciences Department, St. Jude Children's Research Hospital, Memphis, TN

11:30 a.m. – 12:30 p.m. Bayside B, Level 1

Student Poster Session

"Wow, you presented at The Midyear?" Impress professors, potential employers, and peers when you present a poster at the prestigious ASHP Midyear Clinical Meeting.

1:00 p.m. – 2:30 p.m. Mandalay Bay B, Level 2

Fundamental Strategies to Secure a Residency: Getting a Head Start as P1-P3

In the tough competition for post graduate positions, how can you stand out? After this presentation you will have fundamental tips, a timeline, and answers to some of the questions you may have, including: When do I start planning my residency search strategy? How can I set up a plan and task list to keep myself on target for success as early as a P1 student? How can I excel in the interview process? You will receive candid advice, and guidance that will be directly applicable to your hunt for a post graduate residency or fellowship. You will be able to follow an outline of what you will need to do as a student during the P1 to P3 years in order to successfully prepare yourself for the residency or fellowship application process. There is no ultimate guarantee of securing a post graduate training program. However, session presenter Joshua Caballero, Pharm.D., BCPP, Associate Professor at Nova Southeastern University is one of the faculty that put together a course that helped their students achieve an 83% residency acceptance rate, compared to the national average of 60% in the most recent match, making this one of the most successful residency preparation programs in the nation!

Presenter: Joshua Caballero, PharmD, BCPP, Associate Professor, Nova Southeastern University College of Pharmacy

Moderator: Samar Chakar, Pharm.D. Candidate, University of New England College of Pharmacy, and Member, Pharmacy Student Forum Executive Committee, Lawrence, MA

1:00 p.m. – 4:00 p.m. Bayside B, Level 1

Residency Showcase

For more information see page 6

4:30 p.m. – 5:30 p.m. Mandalay Bay D, Level 2

Dollars and Good Sense

The days of living off student loans and fast food are coming to an end. You are entering the real world of working professionals...and the real world of mortgages, debt, bills, and investment opportunities. This popular session will help you manage your finances and learn strategies to help you handle your current responsibilities while planning for the future!

Speakers: Eric Truvillion, Financial Representative and Financial Advisor, New England Financial, Tampa, FL; Alonzo Barnes, Jr., Financial Representative, New England Financial, Tampa, FL

Moderator: Thomas Achey, Pharm.D. Candidate, Auburn University, and Vice Chair, Pharmacy Student Forum Executive Committee, Helena, AL

Residency Showcase

Bayside B, Level 1

Monday, December 3 1:00 p.m. – 4:00 p.m.

**Tuesday, December 4 8:00 a.m. – 11:00 a.m.
1:00 p.m. – 4:00 p.m.**

The Residency Showcase is for individuals pursuing residency positions in 2013-14. Make the rounds all in one place—and save money and time. The Residency Showcase is set up for your convenience, allowing you to meet with representatives from hundreds of programs across the country. Remember, the Showcase is continued on Tuesday, but each program will only be available during one of the three time slots so plan ahead! Business dress is recommended.

For those students interested in visiting the Residency Showcase but who will not be pursuing a residency in 2013-14, please wait until the last hour to enter the Showcase. Be courteous—do not engage programs in a discussion at this point as this prevents them from talking to those pursuing residency positions next year! We recommend attending the student educational sessions on Monday and Tuesday designed exclusively for P1-P3 students.

- Fundamental Strategies to Secure a Residency: Getting a Head Start as P1-P3
- Effective CV and Resume Writing

Special Session

Monday, December 3 | 2:00 p.m. – 3:30 p.m.

The Emily Jerry Story: Lessons Learned from a Fatal Medication Error

In February 2006, Emily Jerry, a beautiful two year old receiving her final chemotherapy treatment, tragically died as a result of improperly-prepared chemotherapy. The supervising oncology pharmacist, Eric Cropp, was sent to jail and his pharmacy license revoked.



Emily's father, Christopher Jerry, and Mr. Cropp will speak about the error, forgiveness, system failure, and their shared efforts to improve patient safety. Michael Cohen from the ISMP will follow with lessons learned and an analysis of contributing factors and response to errors.

Other Sessions Recommended for Students

All sessions are located in Mandalay Bay South Convention Center.

MONDAY DECEMBER 3, 2012

- The Emily Jerry Story: Lessons Learned from a Fatal Medication Error *South Seas D, Level 3*
- Pain, Sedation, and Delirium in the ICU: Cutting-Edge Updates *Breakers C, Level 2*
- Expecting the Unexpected: Treatment of Opiate Dependence in Pregnancy *South Seas J, Level 3*
- Update in Emergency Department Practice: Service Optimization & Collaborative Practice *Mandalay Bay D, Level 2*
- Medical Marijuana: Rational Medicine or Potential Medication Misadventure? *South Seas D, Level 3*

TUESDAY, DECEMBER 4, 2012

- Is Natural Better? Nutraceuticals in the Treatment of Pain *Reef D, Level 2*
- Management Pearls 2012 *South Seas E, Level 3*
- What You Need to Know to Get Started: Opportunities in Medical Writing *Reef D, Level 2*
- Immunizing Inpatients: Evidence Plus Effort Equals Optimization *South Seas J, Level 3*
- Clinical Pearls 2012 *Mandalay Bay H, Level 2*
- Antibiotic Stewardship: Get on Board Before We Drown in Bacterial Resistance *South Seas D, Level 3*

WEDNESDAY, DECEMBER 5, 2012

- Case-Based Approach to Insulin Initiation and Intensification *Reef D, Level 2*
- Lytes Off in Vegas! The Acute Management of Potassium and Calcium Disorders *Mandalay Bay B, Level 2*
- Spotlight on Science—Nanotechnology in Medicine: How Very Tiny Solutions can Impact Big Problems *Mandalay Bay F, Level 2*
- Transitioning Through ADHD: Pharmacotherapeutic Management from Childhood to Adulthood *Reef D, Level 2*
- Beers, Antihypertensives, and Medical Home: An Update in Geriatric Practice *South Seas B, Level 3*
- Antimicrobial Dosing in Obesity: Finding the Holy Scale *Mandalay Bay D, Level 2*



Tuesday, December 4

7:00 a.m. – 9:00 a.m. **Lagoon G, Level 2**

SSHP Faculty Advisor Breakfast Workshop

(Closed session by invitation only)

Presenter: Diana L. Dabdub, Director, ASHP Pharmacy Student Forum, Bethesda, MD

8:00 a.m. – 11:00 a.m. **Bayside B, Level 1**

Residency Showcase

For more information see page 11.

11:15 a.m. – 12:15 p.m. **Mandalay Bay D, Level 2**

Developing Informal Leaders to Drive Practice Model Advancement

Networking Session Hosted by the Section of Pharmacy Practice Managers' Advisory Groups on Pharmacy Practice Model Initiative and Leadership Development

Facilitators: Anita Harrison, Pharm.D., BCPS, Clinical Pharmacy Specialist, SICU, PGY1 Residency Director, Methodist Dallas Medical Center, Dallas, TX; Kelly Martin, Pharm.D., M.S., Manager, Inpatient Pharmacy Services, Virginia Commonwealth University Health System, Richmond, VA

This networking event is intended for anyone interested in learning more about how to drive practice advancement. Groups will discuss how various types of informal leaders influence change and how to become, or influence others to become, informal leaders.

Discussion Topics:

- Discuss how informal leaders influence change
- Discuss how to implement transitions of change
- Discuss strategies to build effective multidisciplinary relationships to foster practice model advancements

11:15 a.m. to 12:45 p.m. Lagoon G, Level 2

Clinical Leadership

Networking Session Hosted by the Section of Clinical Specialists and Scientists' Advisory Group on Clinical Leadership

Facilitator: John S. Clark, Pharm.D., M.S., BCPS, FASHP, Director of Pharmacy Services, University of Michigan, Ann Arbor, MI

Discussion Topics:

- Is everyone a clinical leader? What makes a clinical leader?
- Teambuilding, accountability – Who is responsible?
- To measure or not to measure metrics and their impact on clinical leadership

11:30 a.m. – 12:30 p.m. Bayside B, Level 1

Student Poster Session

1:00 p.m. – 3:00 p.m. Mandalay Bay B, Level 2

Effective CV and Resume Writing

Getting ready to enter the pharmacy workforce? Before you know it, potential employers will start requesting your CV or resume. Get real-world advice on how to market your skills effectively. Learn important tips about preparing your CV and resume and how to avoid common mistakes.

Presenter: Joseph Bonnarens, PhD, Associate Dean for Student Affairs, Manchester University College of Pharmacy, Fort Wayne, IN

Moderator: Jacob Thompson, Pharm.D., M.S., Associate Director of Pharmacy, UHS Wilson Medical Center, Johnson City, NY

1:00 p.m. – 4:00 p.m. Bayside B, Level 1

Residency Showcase

For more information see page 10.

4:30 p.m. – 5:30 p.m. Mandalay Bay D, Level 2

Clinical Pearls for Students

Based on the popular Clinical Pearls session for practicing pharmacists, the session is custom tailored for a student audience. Come hear the valuable lessons learned as new practitioners share clinical pearls that can help you prepare for residency training or entering practice.

Moderator: Adam Pate, PharmD, Assistant Professor, University of Louisiana at Monroe College of Pharmacy, Monroe, LA

PRESENTATIONS:

Making Sense of Alphabet Soup, the ABC's of Chemotherapy

Jill M. Comeau, PharmD, BCOP, Assistant Professor Hematology/Oncology, University of Louisiana at Monroe College of Pharmacy, Gratis Assistant Professor of Medicine, Feist-Weiller Cancer Center and Bone Marrow Transplant Unit, LSUHSC-Shreveport, Shreveport, LA

Defense Against the Dark Arts: Approach to the Toxic Patient

Nadia Awad, Pharm.D., PGY-2 Emergency Medicine Pharmacy Resident, Robert Wood Johnson University Hospital and Rutgers, The State University of New Jersey, New Brunswick, NJ

A Shot?...Or Not!: Oral Management of Type 2 Diabetes

Kristen Pate, Pharm. D., Clinical Assistant Professor, University of Louisiana at Monroe College of Pharmacy, Monroe, LA

VTE Prophylaxis in Hospitalized Patients

Sarah A. Johannes, PharmD, Health-System Pharmacy Administration Resident, University of North Carolina Hospital and Clinics, Chapel Hill, NC

Medications and QTc: The Myths, The Facts and Pharmacist's Responsibility

Claire Markway, PharmD, PGY2 Pediatric Pharmacy Resident, St. Louis Children's Hospital, St. Louis, MO

Tuesday, December 4 | 8:00 p.m. – Midnight

Students' Night Out

Party with a purpose! After a long week of education programming, interviews, poster presentations, and more; you need to kick back and relax. Join pharmacy students from across the country for a fun night out in Las Vegas!

You must present a Midyear 2012 badge and be 21 years or older with proper ID to attend. Shuttle service will not be provided.

Residency Showcase

Bayside B, Level 1

Monday, December 3 1:00 p.m. – 4:00 p.m.

Tuesday, December 4 8:00 a.m. – 11:00 a.m.
1:00 p.m. – 4:00 p.m.

The Residency Showcase is for individuals pursuing residency positions in 2013-14. Make the rounds all in one place—and save money and time. The Residency Showcase is set up for your convenience, allowing you to meet with representatives from hundreds of programs across the country. Remember, the Showcase is continued on Tuesday, but each program will only be available during one of the three time slots so plan ahead! Business dress is recommended.

For those students interested in visiting the Residency Showcase but who will not be pursuing a residency in 2013-14, please wait until the last hour to enter the Showcase. Be courteous—do not engage programs in a discussion at this point as this prevents them from talking to those pursuing residency positions next year! We recommend attending the student educational sessions on Monday and Tuesday designed exclusively for P1-P3 students.

- Fundamental Strategies to Secure a Residency: Getting a Head Start as P1-P3
- Effective CV and Resume Writing

Wednesday, December 5

11:15 a.m. - 12:30 p.m. Room – Lagoon H, Level 2

Informatics in Pharmacy Practice Experiences

Networking Session Hosted by the Section of Pharmacy Informatics and Technology's Advisory Group on Pharmacy Informatics Education

Facilitator: Joe Lassiter, M.S., Pharm.D., BCPS, CPHIMS,
Director of Experiential Education, Pacific University School of Pharmacy, Hillsboro, OR

Discussion Topics:

- Early exposure to informatics in introductory Pharmacy Practice Experiences (IPPE)
- Informatics and clinical decision support training during Advanced Pharmacy Practice Experiences (APPE)
- Assessment of informatics competencies for entry level pharmacist practice



The Midyear Mobile App



NEW AND IMPROVED!

Don't forget to download ASHP's Mobile Midyear app that puts The Midyear in the palm of your hand! Search educational sessions, exhibits, social events, Residency Showcase, poster sessions and add them all to your personal calendar.

The application is available for iPhone®, iPad®, Android™, and BlackBerry® users in app stores and at www.ashp.org/mobilemidyear

Thursday, December 6



Networking Luncheon

12:05 p.m. – 1:50 p.m.

Featuring:
Robyn Benincasa

*Extreme Performance:
Why Winners Win*

What are the five most common attributes of people who make a lifelong habit of winning?

Robyn Benincasa—NYT Best-Selling Author and World Champion Adventure Racer—accepts full blame for inspiring people to do insane things like climb Mount Kilimanjaro, run their first triathlon, start their own adventure racing teams, or start their own businesses. This is, after all, who she is and what she does: Robyn Benincasa inspires people to do amazing things.

Benincasa has made an art form of extreme performance by competing and winning at the highest levels of sport and business. Soon after earning a Marketing degree from Arizona State University, Robyn “started at the top” Fortune 500 pharmaceutical company where she earned the prestigious “Rookie of the Year” award.

While consistently achieving top sales in her day job, Robyn completed six Ironman races, with two podium finishes. In her 15-year career as a professional adventure racer, Benincasa has competed in close to 40 expedition-length events—gnarly, multiday, multisport killers such as Primal Quest and Eco-Challenge. She has biked through jungles in Borneo, climbed Himalayan giants in Nepal, trekked across lava fields in Fiji, rafted rapids in Chile—and racked up multiple world championship titles along the way. In her spare time, Robyn, is a full-time firefighter in San Diego, on the nation's first all-female crew.

At this networking lunch, get inspired by an unforgettable presentation on building world class teams and “followership” skills necessary for dynamic role shifting and true teamwork.

2012 ASHP National Clinical Skills Competition Participating Schools

Albany College of Pharmacy and Health Sciences	Oregon State University College of Pharmacy & Oregon Health and Science University	University of Georgia College of Pharmacy
Appalachian College of Pharmacy	Pacific University School of Pharmacy	University of Hawaii at Hilo College of Pharmacy
Auburn University Harrison School of Pharmacy	Palm Beach Atlantic University Lloyd L. Gregory School of Pharmacy	University of Houston College of Pharmacy
Belmont University College of Pharmacy	Philadelphia College of Osteopathic Medicine School of Pharmacy	University of Illinois at Chicago College of Pharmacy
Butler University College of Pharmacy	Philadelphia College of Pharmacy	University of Iowa College of Pharmacy
California Northstate University College of Pharmacy	Presbyterian College School of Pharmacy	University of Kansas School of Pharmacy
Campbell University College of Pharmacy and Health Sciences	Purdue University College of Pharmacy	University of Kentucky College of Pharmacy
Chicago State University College of Pharmacy	Regis University School of Pharmacy	University of Louisiana at Monroe College of Pharmacy
Concordia University Wisconsin School of Pharmacy	Roosevelt University College of Pharmacy	University of Maryland Eastern Shore
Creighton University School of Pharmacy	Roseman University of Health Sciences College of Pharmacy	University of Maryland School of Pharmacy
Drake University College of Pharmacy and Health Sciences	Rutgers, The State University of New Jersey Ernest Mario School of Pharmacy	University of Michigan College of Pharmacy
Duquesne University Mylan School of Pharmacy	Samford University McWhorter School of Pharmacy	University of Minnesota College of Pharmacy
D'Youville College School of Pharmacy	Shenandoah University Bernard J. Dunn School of Pharmacy	University of Mississippi School of Pharmacy
East Tennessee State University Bill Gatton College of Pharmacy	South Carolina College of Pharmacy	University of Missouri - Kansas City School of Pharmacy
Ferris State University College of Pharmacy	South Dakota State University College of Pharmacy	University of Montana Skaggs School of Pharmacy
Florida A & M University, College of Pharmacy and Pharmaceutical Sciences	South University School of Pharmacy	University of Nebraska Medical Center College of Pharmacy
Hampton University School of Pharmacy	Southern Illinois University Edwardsville School of Pharmacy	University of New England College of Pharmacy
Harding University College of Pharmacy	Southwestern Oklahoma State University College of Pharmacy	University of New Mexico College of Pharmacy
Howard University College of Pharmacy	St. John Fisher College, Wegmans School of Pharmacy	University of North Carolina Eshelman School of Pharmacy
Husson University School of Pharmacy	St. John's University College of Pharmacy	University of Oklahoma College of Pharmacy
Idaho State University College of Pharmacy	St. Louis College of Pharmacy	University of Pittsburgh School of Pharmacy
Jefferson School of Pharmacy, Thomas Jefferson University	Sullivan University College of Pharmacy	University of Puerto Rico School of Pharmacy
Lake Erie College of Osteopathic Medicine School of Pharmacy	Temple University School of Pharmacy	University of Rhode Island College of Pharmacy
Lebanese American University School of Pharmacy	Texas A&M University Health Science Center Irma Lerma Rangel College of Pharmacy	University of Southern California School of Pharmacy
Lipscomb University College of Pharmacy	Texas Southern University College of Pharmacy	University of Tennessee College of Pharmacy
Loma Linda University School of Pharmacy	Texas Tech University School of Pharmacy	University of Texas at Austin College of Pharmacy
Long Island University Arnold & Marie Schwartz College of Pharmacy	The Ohio State University College of Pharmacy	University of the Incarnate Word Feik School of Pharmacy
Massachusetts College of Pharmacy and Health Sciences–Boston	Touro New York College of Pharmacy	University of the Pacific Thomas J. Long School of Pharmacy & Health Sciences
Massachusetts College of Pharmacy and Health Sciences–Worcester/Manchester	Touro University California College of Pharmacy	University of Toledo College of Pharmacy
Mercer University College of Pharmacy and Health Sciences	Union University School of Pharmacy	University of Utah College of Pharmacy
Midwestern University College of Pharmacy–Chicago	University at Buffalo School of Pharmacy & Pharmaceutical Sciences	University of Washington School of Pharmacy
Midwestern University College of Pharmacy–Glendale	University of Arizona College of Pharmacy	University of Wisconsin-Madison School of Pharmacy
North Dakota State University College of Pharmacy	University of Arkansas for Medical Sciences College of Pharmacy	University of Wyoming School of Pharmacy
Northeast Ohio Medical University	University of California–San Diego, Skaggs School of Pharmacy	Virginia Commonwealth University School of Pharmacy
Northeastern University Bouve College of Health Sciences School of Pharmacy	University of California–San Francisco School of Pharmacy	Washington State University College of Pharmacy
Notre Dame of Maryland University School of Pharmacy	University of Charleston School of Pharmacy	Wayne State University Eugene Applebaum College of Pharmacy
Nova Southeastern University College of Pharmacy	University of Cincinnati James L. Winkle College of Pharmacy	West Virginia University School of Pharmacy
Ohio Northern University Raabe College of Pharmacy	University of Colorado, Skaggs School of Pharmacy and Pharmaceutical Sciences	Western University of Health Sciences College of Pharmacy
	University of Connecticut School of Pharmacy	Wilkes University Nesbitt School of Pharmacy and Nursing
	University of Findlay College of Pharmacy	Wingate University School of Pharmacy
	University of Florida College of Pharmacy	Xavier University of Louisiana College of Pharmacy

If you are interested in learning more about the competition, please visit our website at www.ashp.org/clinicalskills



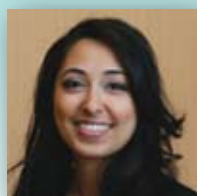
2012-13 Pharmacy Student Forum Executive Committee



Lisa Scherkenbach
Chair
University of Minnesota
College of Pharmacy



Thomas Achey
Vice Chair
Auburn University
Harrison School
of Pharmacy



Samar Chakar
University of New England
College of Pharmacy



Jacalyn Jones
Northeast Ohio
Medical University
College of Pharmacy



Thomas Lupton
University of Kansas
School of Pharmacy

2012-13 Pharmacy Student Appointments to ASHP Councils



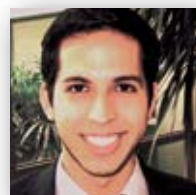
*Commission on
Affiliate Relations*
Casey Combs



*Council on
Pharmacy Management*
Colin Beatty



*Council on
Public Policy*
Joanna Wakeman



Council on Therapeutics
Juan Manuel Hincapie Castillo



*Council on
Pharmacy Practice*
Meenakshi Shelat



*Council on Education and
Workforce Development*
Nicole Grimmer



**PHARMACY STUDENT
FORUM**



American Society of
Health-System Pharmacists®

7272 Wisconsin Avenue • Bethesda, Maryland 20814
866-279-0681 • Fax: 301-664-8877 • www.ashp.org